

# Important announcement about AJ "ROCK" Stages meeting place

## Meeting places for the following stages:

From **outside** of the venue



Page **A** meeting place

From **inside** of the venue



Please come directly to each stage entrance

Program		March 23 (Sat)	March 24 (Sun)	Meeting time
<b>ROSE RED</b>				
①	10:10~10:45	Blue Exorcist DAMNED CHORD Special stage	How much heavy dumbbells can you lift ?	➡➡ 09:25
②	11:30~12:05	"Lord El-Melloi II's Case Files {Rail Zeppelin} Grace note" Special Stage	"That Time I Got Reincarnated as a Slime" Special Stage	➡➡ 10:45
<b>OASIS GREEN</b>				
①	09:30~10:05	"Is It Wrong to Try to Pick Up Girls in a Dungeon?" Special Stage	TV animation "Dr.STONE" SPECISL STAGE	➡➡ 8:45
②	10:50~11:25	TV animation「WE NEVER LEARN」Special Stage	『PSYCHO-PASS』SPECIAL STAGE	➡➡ 10:05
③	12:10~12:45	Saenai heroine no sodate-kata. Fine Special Stage	Fate/Grand Order SpecialStage in AnimeJapan 2019	➡➡ 11:25
<b>COBALT BLUE</b>				
①	09:30~10:05	Sound! Euphonium The Movie -Our Promise: A Brand New Day-SPECIAL STAGE	"Attack on Titan" Season 3 SPECIAL STAGE	➡➡ 8:45
②	10:50~11:25	NETFLIX Anime Festival Special Stage	「KONOSUBA-God's blessing on this wonderful world!-Legend of Crimson」special stage	➡➡ 10:05
③	12:10~12:45	TV animation "MY HERO ACADEMIA"2019 PLUS ULTRA STAGE	STARBLAZERS2202 Award	➡➡ 11:25
<b>KILLER PINK</b>				
①	10:10~10:45	Project ANIMA The Third "Kids,Game Anime Department" Award Ceremony	「Kiratto Pri☆chan」Season2 Housou Chokuzen Stage Yattermita !	➡➡ 9:25
②	11:30~12:05	"WASTEFUL DAYS OF HIGH SCHOOL GIRL" AnimeJapan Special Stage	"Infinite Dendrogram" New TV Anime Adaptation Special Stage	➡➡ 10:45

\* Both your AnimeJapan 2019 Admission Ticket and Stage Ticket will be needed during admission. If you have a QR code ticket, be sure to exchange it at the Overseas Tickets Exchange Counter beforehand.

\* If you are late to the designated meeting time you might not be able to enter from the meeting entrance.

\* If you need any help at the venue please ask the nearby staff.

# Important announcement about AJ "ROCK" Stages meeting place

## Meeting places for the following stages:

From **outside** of the venue







Follow the route on page **B** to each stage entrance

From **inside** of the venue



Please come directly to each stage entrance

Program		March 23 (Sat)	Meeting time
<b>ROSE RED</b>			
⑦	18:30~19:05	TV Animation "AZUR LANE" Special Stage	 17:45
<b>OASIS GREEN</b>			
⑦	17:50~18:25	toaru project AJ special event	 17:05
<b>COBALT BLUE</b>			
⑦	18:30~19:05	TV Anime "One-Punch Man" Season 2 Maji Special Stage	 17:45
<b>KILLER PINK</b>			
⑥	17:50~18:25	TV Anime "Why the hell are you here,Teacher!?" Special Stage	 17:05

\* Both your AnimeJapan 2019 Admission Ticket and Stage Ticket will be needed during admission. If you have a QR code ticket, be sure to exchange it at the Overseas Tickets Exchange Counter beforehand.

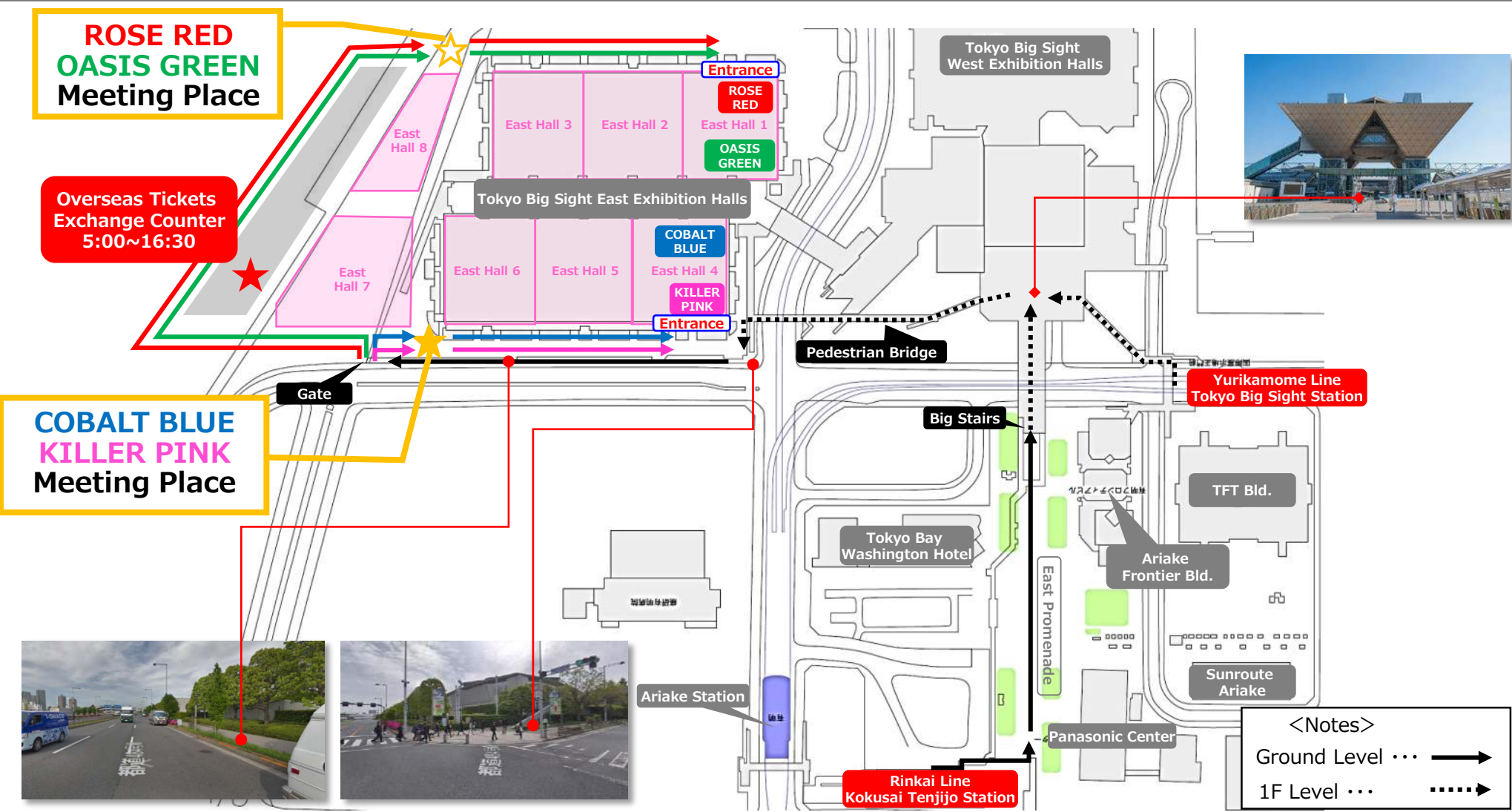
\* If you are late to the designated meeting time you might not be able to enter from the meeting entrance.

\* If you need any help at the venue please ask the nearby staff.

# Come to the meeting place 45 minutes before each stage program.



⚠ If you are **inside** the venue please come directly to each stage entrance.



<Notes>  
Ground Level ... →  
1F Level ... →

- \* Both your AnimeJapan 2019 Admission Ticket and Stage Ticket will be needed during admission. If you have a QR code ticket, be sure to exchange it at the Overseas Tickets Exchange Counter beforehand.
- \* If you are late to the designated meeting time you might not be able to enter from the meeting entrance.
- \* If you need any help at the venue please ask the nearby staff.

Come to the stage entrance **45 minutes before** each stage program.

B

⚠ If you are **inside** the venue please come directly to each stage entrance.

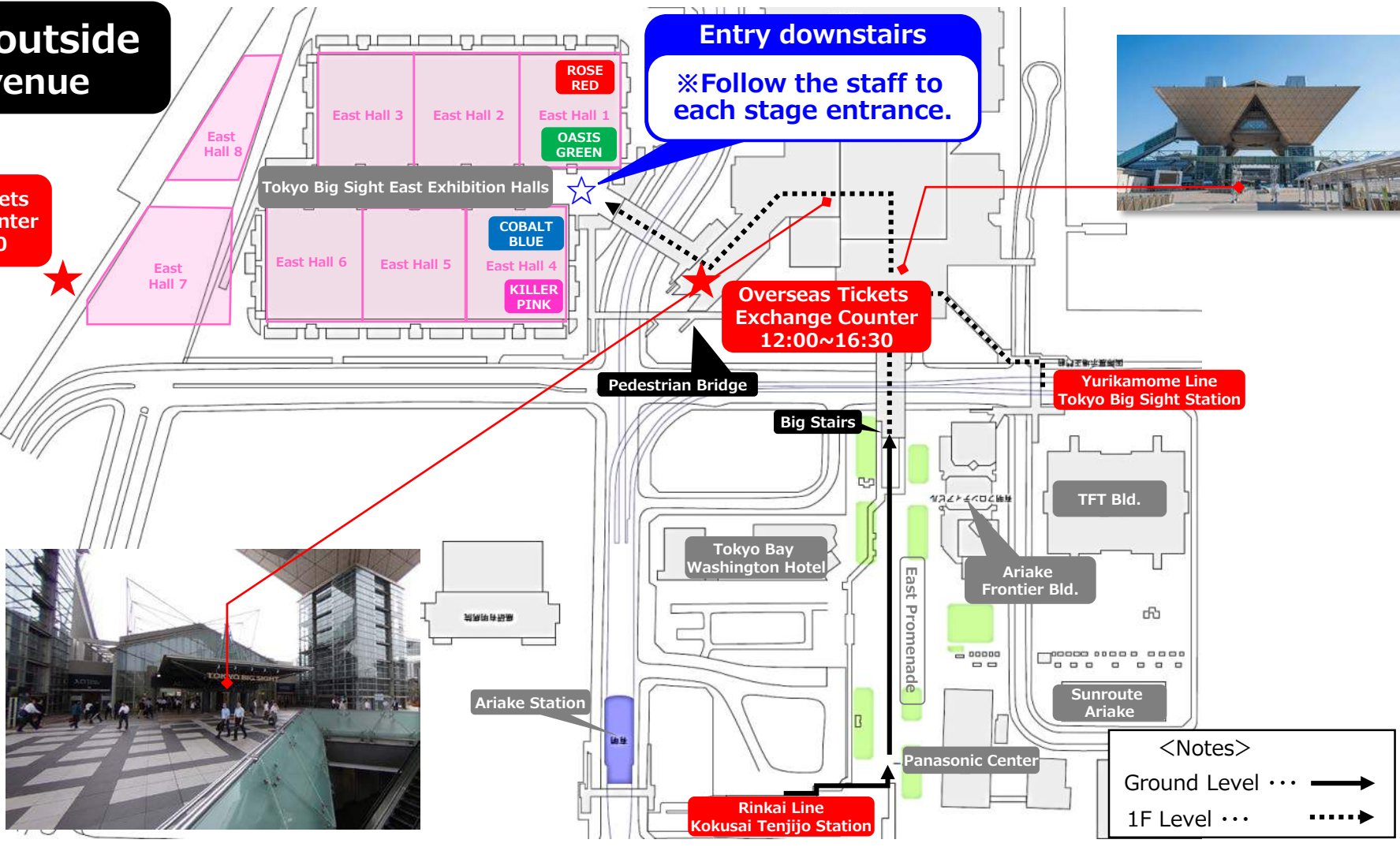
If you are outside of the venue

Overseas Tickets Exchange Counter  
5:00~16:30

Entry downstairs

※ Follow the staff to each stage entrance.

Overseas Tickets Exchange Counter  
12:00~16:30



<Notes>

Ground Level ... →

1F Level ... ..... →

\* Both your AnimeJapan 2019 Admission Ticket and Stage Ticket will be needed during admission. If you have a QR code ticket, be sure to exchange it at the Overseas Tickets Exchange Counter beforehand.

\* If you are late to the designated meeting time you might not be able to enter from the meeting entrance.

\* If you need any help at the venue please ask the nearby staff.